



Card Solutions For A Better World

ML2000 Metal Plate Laser Engraver

FEATURES

STANDARD



USED BY:

- MANUFACTURERS OF:
 - APPLIANCES
 - MOTORS
 - AUTOMOTIVE COMPONENTS
 - PUMPS
 - ELEVATORS
 - CRANES
 - FIRE DOORS

IDEAL FOR:

- CABLE TAGS
- INVENTORY TAGS
- ASSET CONTROL TAGS
- WORK IN PROGRESS TAGS
- SERIAL NUMBER TAGS

AVAILABLE IN TWO VERSIONS:

- 6 Watt
- 20 Watt

SOFTWARE:



SERVICE PROGRAM:

EASE OF CARE

Provide life-cycle support to ensure that the laser station is always operating at high performance

ML2000 is a fully AUTOMATIC system and is equipped with an adjustable tag input hopper which holds up to 250 METAL TAGS. Blank tags are automatically moved from the hopper area to the laser marking module. Once the phase of laser engraving on nameplates is completed, the tags are placed in an internal FIFO stacker or unloaded using the side eject option.



ML2000 AUTOMATIC LASER MARKING ON METAL TAGS A HIGH DEFINITION, CRISP MARK WITH EXCELLENT CONTRAST

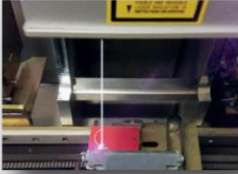
Laser marking systems are commonly used for **PART IDENTIFICATION AND PRODUCT TRACEABILITY INFORMATION** such as serial numbers, data codes, 2D data matrix barcodes, QR codes, 1D barcodes, manufacturing codes, material flow, graphics and logos.

The **ML2000** is designed for efficient marking on steel tags, aluminum tags, anodized aluminum tags and more. The fiber based optical design and rugged mechanical design allows the **ML2000** to operate in harsh industrial environments with maximum uptime. The compact footprint of the **ML2000** makes it easy to integrate into a variety of industrial applications. The energy efficient integrated air-cooling and proven laser design insures low maintenance and ongoing service costs.

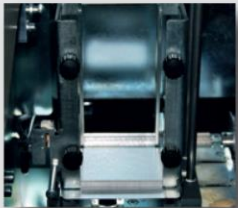
The **ML2000** is a fully **AUTOMATIC** system and is equipped with an adjustable tag input hopper which holds up to **250 BLANK TAGS**. The blank tags are automatically moved from the hopper area to the laser marking module. Once laser marking is completed, the tags are placed in an internal FIFO stacker or unloaded using the side eject option.

The **ML2000** is available in two version 6 W and 20 W. The new 20 W laser station is able to **modulate the power** in the engraving phase in order to **obtain different shades of gray**.

ML2000 Metal Plate Laser Engraver



Laser marking



Input Hopper



ML2000 metal laser



Laser fumes unit for 20W version

FEATURES AND SPECIFICATIONS

PLATE AND FEEDER

dimensions	width: min. 30 mm - max. 115 mm height: min. 21 mm - max. 90 mm
thickness	min. 0,4 - max. 0,9 mm
materials	stainless steel, aluminum, copper and brass
load capacity	up to 250 plates (0,4 mm)
discharge capacity	up to 250 plates capacity (0,4 mm)
performance	it depends on material type and marking area

COMMUNICATION INTERFACE AND SOFTWARE

communications interface	serial port RS232
direct control	CIM, Xon-Xoff, MultiEmbosser e Pound-Pound
software	PC application software Laser Tag One compatible with Windows / XP / Vista / 7 / 8

HARDWARE

power supply	100 - 117 - 220 - 230 or 240 Volts - 50 or 60 Hz
power consumption	100 Watt
operating environment	5 °C ÷ 40 °C

relative humidity: 30% - 90 % non condensing

dimensions (WxDxH)	630 x 740 x 575 mm
weight	73 Kg

HARDWARE LASER UNIT

	6 Watt Version	20 Watt Version
Nominal power	6 W ± 5% (@ 50kHz)	>20W
Wavelength	1064 nm	1060 - 1080 nm
Laser source	Q - switched DPSS	Pulsed fiber laser
Repetition rate range	15 - 200 kHz	2 - 100 KHz
Pulse width (typ)	20 - 25 ns@20kHz	100 ns
Interface	USB embedded: USB 2.0; RS232 for diagnostic	4 x USB, 3 x Ethernet, 1 x RS232, Digital I/O
i/o extension (imark configuration only)	4 axis controls (X,Y,Z and rotative a xis) I/O	4 axis controls (X,Y, Z and rotative axis) Up to 16 digital programmable I/O
Temperature range	15°C to 35°C – Storing -5 to +55 °C	5°C to 40°C
Cooling system	Air cooled	Air cooled
Power supply	24VDC/13A	100/240 VAC - 50/60 Hz 400W (Max)
Laser power consumption	Typical 200W – Maximum 300W	Maximum 400W

SINGAPORE

VICCARD PTE LTD / Email:
viccard@singnet.com.sg
www.viccard.com.sg

MALAYSIA

VICCARD MALAYSIA SDN BHD
Tel: +603 7960-7932
Email: sales@viccard.com.my
www.viccard.com.my